

Primarily Lawn, Plants From Other Regions, Chemicals

Is Your YARD GREEN?

Toni Stahl, volunteer

National Wildlife Federation

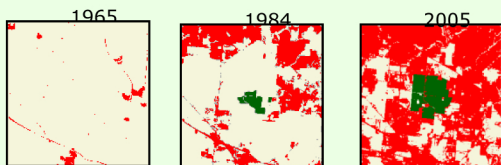
Marc-a@columbus.rr.com <http://www.backyardhabitat.info>



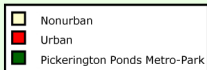
Minimal Lawn, Regionally Native Plants, No Chemicals

Problem

Urban Sprawl Is Rapid



Compliments of
Columbus & Franklin
County Metro Parks



Traditional Yards Harm The Environment

- 40 million acres of traditional yards in the United States
- Lawn is the largest irrigated crop in the US
- Chemicals in 2001 per EPA
 - 101 million pounds of Pesticides applied to home lawns annually
 - Lawn averages 10 times more Fertilizers & Pesticides than Agriculture uses for equivalent area
- 800 million gallons of gasoline burned every week mowing lawns

Importance



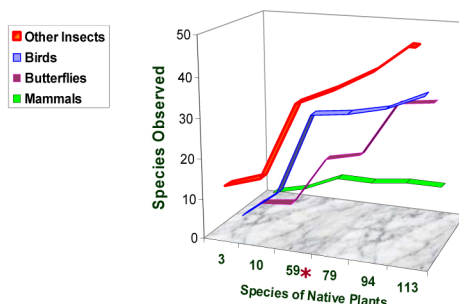
**Nature Is The
Window To Our
Environmental
Health**

Results

Case Study #1

Transition from Traditional to Sustainable (2001-2006)

Number of different species observed in the same yard each year as native plant species were added

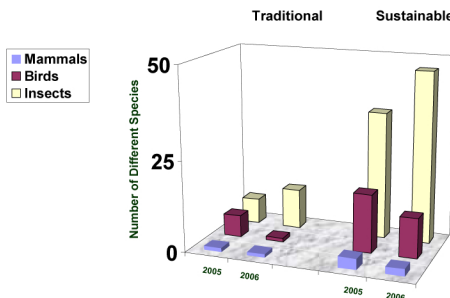


*Chemical Use Stopped

Case Study #2

Traditional vs. Sustainable Yards (2005-2006)

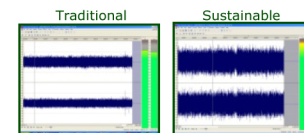
Different species observed in adjacent yards during equivalent periods



Additional Results: Study #2

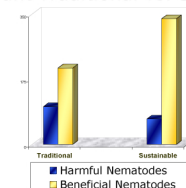
2007 Night Sounds Measurement

Traditional Yard ~Half as Loud as Sustainable Yard



Nematodes Indicate Soil Health

2006 Count Traditional vs. Sustainable



Conclusions

Recommendations To Improve Our Environmental Health

Homeowners

- Reduce lawn area
- Remove Invasive plants
- Add diverse native plants
- Reduce chemical use

Governments

- Promote 'Green Space'
- Develop programs to curb 'Urban Sprawl'
- Update weed laws
- Educate the general public

School Officials

- Add 'sustainable yard care' to curriculum

Plant Nurseries

- Discontinue selling Invasive plants
- Sell native plants